

WORK and PLAY

BY FOREST RIVER, INC.

*Travel Trailers & Fifth Wheel Cargo Carriers
with Living Quarters.*



Forest River, Inc. 3010 College Avenue, Goshen, IN 46528
Mail: Forest River c/o Work and Play P.O. Box 3030 Elkhart, IN 46515
Phone: 574.533.5934 Fax: 574.534.8137
www.forestriverinc.com www.forestriveraccessories.com

YOUR DEALER

As Work and Play constantly strives to improve our product, all specifications listed in this informative brochure are subject to change without notice or obligation. Photos may show optional equipment which is not included in the purchase price of the unit. Review a current model on your dealer's lot today. **CONSULT YOUR LOCAL DEALER FOR WARRANTY INFORMATION.** LITHO: U.S.A. FOR 0585

WORK AND PLAY

LT/LK MODEL



(BELOW) THE KITCHEN IN THE LT/ LK FEATURES A DOUBLE BOWL SINK, A 3 CUBIC FOOT REFRIGERATOR, A 3 BURNER COOKTOP, SPACIOUS BASE CABINETS AND OVERHEAD STORAGE.



(ABOVE & BELOW) YOU WILL APPRECIATE THE FLEXIBLE USE OF SPACE IN THE CARGO AREA OF THE LT/LK MODEL. THE CARGO ARE CAN BE EQUIPPED WITH THE OPTIONAL SOFA, FLIP DINETTE OR BUNK BEDS WHICH ARE EASILY STORED TO MAKE MORE ROOM FOR YOUR GEAR. (SHOWN WITH THE FLIP DINETTE AND FLIP SOFA)



THE SPACIOUS BATHROOM FEATURES A 26" X 38" SHOWER WITH VANITY AND MIRROR.

WORK AND PLAY

FS MODEL



THIS MODEL WAS CREATED TO GIVE ITS OLDER BROTHER, THE DB MODEL, A FACE LIFT. WITH THE ADDITION OF THE FRONT SLIDE, IT IS NOW ONE OF OUR MORE POPULAR FLOORPLANS.



(ABOVE AND BELOW) THE FS FEATURES A PRIVATE BEDROOM WITH A 60" X 74" BED. (SHOWN WITH OPTIONAL TV AND TV CABINET)



(ABOVE) THE SPACIOUS BATHROOM FEATURES A 26"X38" SHOWER WITH VANITY AND MIRROR.



(ABOVE) ONE OF THE FEATURES IS A VERY WORKABLE KITCHEN AND DINING AREA WITH PLENTY OF STORAGE, AND EVERYTHING WITHIN REACH.



(ABOVE) WITH ALL THE AMENITIES MENTIONED IN THE OTHER PICTURES, YOU STILL HAVE A VERY SPACIOUS CARGO AREA; THAT CAN ALSO DOUBLE FOR MORE LIVING SPACE. (SHOWN WITH OPTIONAL FOLDING BUNKS)

WORK AND PLAY

WR

MODEL



(ABOVE & BELOW) FEATURES A PRIVATE BEDROOM WITH 2 NICE SIZED WARDROBES WITH DRAWERS, UNDERBED STORAGE WITH FULL PASS THROUGH FROM SIDE TO SIDE IN THE FRONT OF THE BED, AND A MIRRORED HEADBOARD WITH SHELVING; GIVING YOU THE COMFORT OF HOME.



(ABOVE) THE WR HAS A SPACIOUS KITCHEN WITH DINETTE FOR YOU TO PREPARE AND ENJOY YOUR MEALS.



SHOWN FROM ABOVE, THE BATH HAS A 35" X 35" RADIUS SHOWER WITH SLIDING GLASS DOORS.



(ABOVE) WITH ALL THE AMENITIES MENTIONED IN THE OTHER PICTURES, YOU STILL HAVE A VERY SPACIOUS CARGO AREA, THAT CAN ALSO DOUBLE FOR MORE LIVING SPACE. (SHOWN WITH OPTIONAL FLIP SOFAS AND FREESTANDING DINETTE)

WORK AND PLAY



MODEL



THE FIFTH WHEEL MODELS FEATURE LOADS OF BASE AND OVERHEAD CABINET STORAGE. THERE IS A QUEEN SIZE MATTRESS IN THE UPPER DECK, ALONG WITH 2 NICE SIZED WARDROBES AND A LARGE MIRRORED HEADBOARD WITH SHELVING.



SHOWN FROM ABOVE, THE BATH HAS A 35" X 35" RADIUS SHOWER WITH SLIDING GLASS DOORS.



(ABOVE) THE FK MODEL IS ONE OF OUR MORE POPULAR FIFTH WHEELS WITH A ROOMY KITCHEN AND DINING AREA THAT OFFERS A GREAT PLACE TO PREPARE AND EAT MEALS. THIS IS SEPARATED FROM THE BEDROOM BY A PRIVACY DRAPE.



(LEFT) WITH ALL THE AMENITIES MENTIONED IN THE OTHER PICTURES, YOU STILL HAVE A VERY SPACIOUS CARGO AREA, THAT CAN ALSO DOUBLE FOR MORE LIVING SPACE. (SHOWN WITH OPTIONAL FLIP SOFAS)



WORK AND PLAY **RL** MODEL



(LEFT) THE RL MODEL OFFERS THE LARGEST LIVING QUARTERS IN THE WORK AND PLAY LINE. IT FEATURES BOTH A 79" DINETTE, AS WELL AS A SOFA AND LOTS OF STORAGE SPACE IN THE ROOMY LOUNGE AREA.



(ABOVE) WITH ALL THE AMENITIES MENTIONED IN THE OTHER PICTURES, YOU STILL HAVE A VERY SPACIOUS CARGO AREA, THAT CAN ALSO DOUBLE FOR MORE LIVING SPACE. (SHOWN WITH OPTIONAL FLIP SOFAS)



(ABOVE) THIS TOY HAULER HAS ALL THE AMENITIES YOUR FAMILY WILL ENJOY. THE SPACIOUS KITCHEN WITH PLENTY OF STORAGE MAKES YOU FEEL LIKE YOU ARE RIGHT AT HOME.

WORK AND PLAY **SL** MODEL



THIS TOY HAULER HAS ALL THE AMENITIES YOUR FAMILY WILL ENJOY. THE SPACIOUS CONTOURED KITCHEN WITH PLENTY OF STORAGE MAKES YOU FEEL LIKE YOU ARE RIGHT AT HOME. ENJOY THE 8 CUBIC FT. REFER, 3 BURNER COOK TOP W/ OVEN. THE EYE LEVEL MICROWAVE IS A QUICK MEAL ALTERNATIVE.

ADD THE OPTIONAL ENTERTAINMENT PACKAGE WITH 20" FLAT SCREEN TV AND THE 200 WATT SURROUND SOUND SYSTEM WITH IPOD DOCKING STATION (INCLUDES ADDITIONAL TV IN BEDROOM), WILL KEEP YOU AND YOUR FAMILY ENTERTAINED.



(LEFT) 44" WINDOWS DRESSED WITH DAY NITE SHADES AND HARD VALENCES, BRING THE OUTDOORS IN. BONUS STORAGE HAS BEEN ADDED ABOVE THE WINDOW AND AGAIN BELOW IN THE 79" DINETTE/ DOUBLE BED. OR JUST STAY INSIDE AND ENJOY OR STANDARD FAUX LEATHER SOFA HIDE-A BED. IT PROVIDES YOU A GREAT PLACE TO RELAX.



(ABOVE) BECAUSE OF THE EASY FLOW FROM THE BATHROOM INTO THE BEDROOM AREA AND THE ADDITION OF 8" ADDED HEAD ROOM THE SL MODEL IS ABLE TO ADD EXPANDED STORAGE WITHIN THEIR LIGHT OAK CABINERY AND EXPAND THE SPACIOUS FEELING OF THEIR MASTER BEDROOM. FULL QUEEN BED HAS A MIRRORED HEADBOARD AND ADDITIONAL ALCOVE LIGHTING.



THE WORK AND PLAY BATHROOM AREA IS SPLIT, FEATURING AN OPEN CONCEPT SINK AND NEO ANGLE SHOWER WITH GLASS DOORS EQUIPPED WITH 12-VOLT EXHAUST FAN.

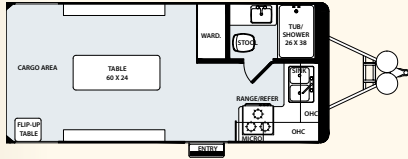
A SEPARATE TOILET AREA IS EQUIPPED WITH A 12-VOLT EXHAUST FAN AND MEDICINE CABINET OVER PORCELAIN STOOL.

Specifications

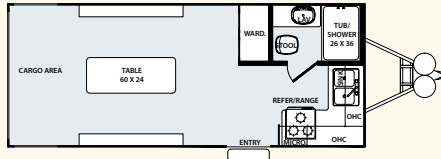
Model #	FW/TT	Hitch Weight	Axle Weight	No. AX	Total Trailer	GVWR	Box Length	Total Length	Cargo Cap	Cargo Length	Water Cap-Gal	Black Gray	Hitch Size
WPT18LT	TT	920	4152	2	5072	9960	18'-1"	22'-8"	4500	10'-9"	80 Gal	38/26	2 5/16"
WPT20LK	TT	844	4963	2	5911	12844	20'-2"	24'-8"	5800	12'-9"	80 Gal	38/26	2 5/16"
WPT22LK	TT	996	5266	2	6264	12996	22'-2"	26'-8"	5800	14'-9"	80 Gal	38/26	2 5/16"
WPT24LK	TT	1148	5569	2	6617	13148	24'-2"	28'-8"	5800	16'-9"	80 Gal	38/26	2 5/16"
WPT26LK	TT	1112	5872	2	6970	13100	26'-2"	30'-8"	5800	18'-9"	80 Gal	38/26	2 5/16"
WPT28LK	TT	1084	6134	2	7218	13084	29'-2"	33'-8"	5800	21'-9"	80 Gal	38/26	2 5/16"
WPT22SK	TT	775	5585	2	6360	12775	22'-2"	26'-8"	5800	9'-7"	80 Gal	38/38	2 5/16"
WPT24SK	TT	850	5835	2	6685	12850	24'-2"	28'-8"	5800	11'-7"	80 Gal	38/38	2 5/16"
WPT26SK	TT	925	6082	2	7007	12925	26'-2"	30'-8"	5800	13'-7"	80 Gal	38/38	2 5/16"
WPT28SK	TT	996	6328	2	7324	12996	29'-2"	33'-8"	5800	16'-7"	80 Gal	38/38	2 5/16"
WPT26DB	TT	1065	6131	2	7196	13065	26'-2"	30'-8"	5500	11'-7"	80 Gal	38/38	2 5/16"
WPT28DB	TT	1140	6381	2	7521	13140	29'-2"	33'-8"	5500	14'-7"	80 Gal	38/38	2 5/16"
WPT28BR	TT	1133	6508	2	7542	13133	29'-2"	33'-8"	5500	10'-4"	80 Gal	38/38	2 5/16"
WPT24BD	TT	888	5966	2	6854	12888	24'-2"	28'-8"	5500	8'-11"	80 Gal	38/38	2 5/16"
WPT26BD	TT	1005	6204	2	7254	13005	26'-2"	30'-8"	5500	10'-11"	80 Gal	38/38	2 5/16"
WPT28BD	TT	1122	6532	2	7654	13122	29'-2"	33'-8"	5500	13'-11"	80 Gal	38/38	2 5/16"
WPT28FS	TT	1209	7401	2	8612	13209	29'-2"	33'-8"	4500	11'-11"	80 Gal	38/38	2 5/16"
WPT30FS	TT	1217	7561	2	8779	13217	31'-2"	35'-8"	4500	13'-11"	80 Gal	38/38	2 5/16"
WPT26WD	TT	1047	6378	2	7425	13047	26'-2"	31'-8"	5000	8'-8"	80 Gal	38/38	2 5/16"
WPT28WD	TT	1023	6901	2	7924	13023	29'-2"	33'-8"	5000	11'-8"	80 Gal	38/38	2 5/16"
WPT30WR	TT	1084	7139	2	8223	13084	31'-2"	35'-8"	5000	10'-5"	80 Gal	38/38	2 5/16"
WPF34FK	FW/GN	2798	7607	2	10405	16798	34'-8"	35'-8"	6000	13'-9"	80 Gal	38/38	NA
WPF38FK	FW/GN	3039	8190	2	11230	17039	38'-8"	39'-8"	5800	17'-9"	80 Gal	38/38	NA
WPF40FK	FW/GN	3079	9741	3	12820	24079	40'-8"	42'-3"	7000	19'-8"	80 Gal	38/38	NA
WPF44FK	FW/GN	3149	10496	3	13645	24149	44'-8"	46'-3"	7000	23'-9"	80 Gal	38/38	NA
WPF34RL	FW/GN	2865	7850	2	10715	16865	34'-8"	35'-8"	5500	9'-8"	80 Gal	38/38	NA
WPF38RL	FW/GN	3106	8407	2	11515	17106	38'-8"	39'-8"	5500	13'-8"	80 Gal	38/38	NA
WPF40RL	FW/GN	3151	9958	3	13105	24151	40'-8"	42'-3"	7000	15'-6"	80 Gal	38/38	NA
WPF44RL	FW/GN	3390	10515	3	13905	24390	44'-8"	46'-3"	7000	19'-6"	80 Gal	38/38	NA
WPF38SL	FW/GN	3566	10960	3	14526	24566	39'-8"	41'-3"	6000	12'-0"	118 Gal	45/45	NA
WPF44SL	FW/GN	4109	11472	3	15581	25000	45'-8"	47'-3"	6000	18'-0"	118 Gal	45/45	NA
WPF34SB	FW/GN	2971	7206	2	10177	16971	34'-8"	35'-8"	6300	18'-7"	80 Gal	38/38	NA
WPF38SB	FW/GN	3212	7765	2	10977	17212	38'-8"	39'-8"	6300	22'-7"	80 Gal	38/38	NA
WPF40SB	FW/GN	3012	9555	3	12567	24012	40'-8"	42'-3"	7000	24'-7"	80 Gal	38/38	NA
WPF44SB	FW/GN	3085	10307	3	13392	24085	44'-8"	46'-3"	7000	28'-7"	80 Gal	38/38	NA

Floorplans

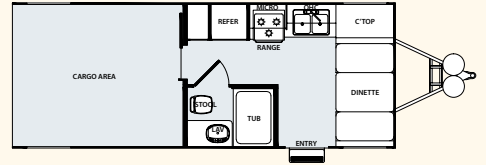
LT



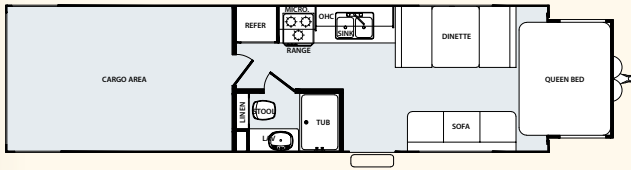
LK



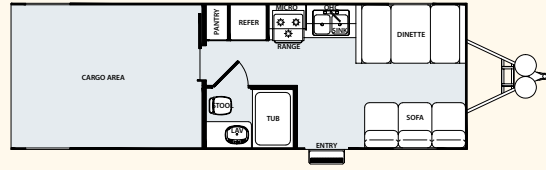
SK



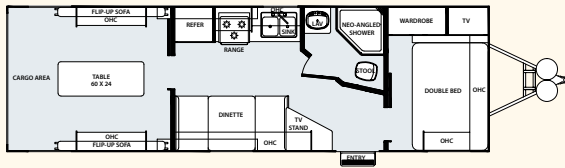
FS



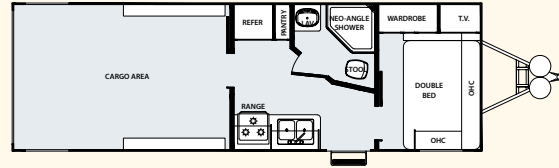
DB



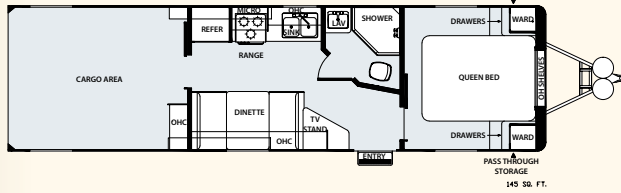
BR



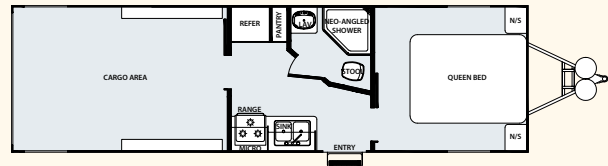
BD



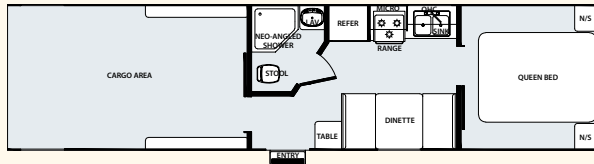
WR



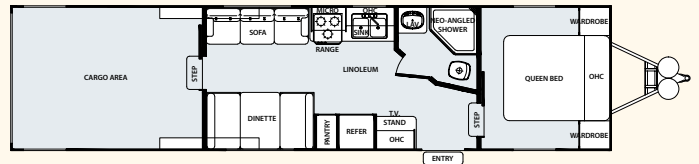
WD



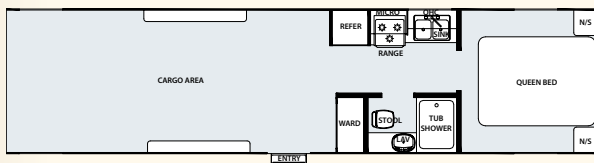
FK



RL



SB



SL

